



RESIDENTIAL

SALES | LETTINGS | PROPERTY MANAGEMENT

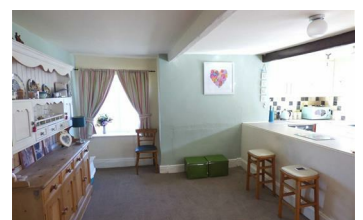


228 Leymoor Road, Huddersfield, HD7 4QP

Asking Price £129,999



***SOLD* SOLD * SOLD * NOT TO BE MISSED** **SUPERBLY PRICED TO SELL** SET IN THIS MUCH SOUGHT AFTER SEMI RURAL LOCATION** In need some updating however is offered for sale and a true delight, well presented, three bedroomed End character cottage. Offering outstanding views of the country side to the rear elevation and being well placed for all village amenities, school's, country walks and access to the M62 motorway networks. The property boasts, gas central heating, wood glazing, having spacious accommodation set over three floors, comprises of: Entrance door, lobby, breakfast kitchen with a large dining area, separate lounge with inglenook fireplace and delightful views. Staircase giving access to the lower floor: with utility room and large integral garage. To the first floor landing, three well sized bedrooms and modern house bathroom. Externally offering driveway which provides off street parking, and gravelled areas to side with views across Golcar. Ideally suitable for a variety of buyers, an early viewing is highly recommended to avoid disappointment. Please phone us to arrange a viewing or mobile out of office hours**



- End Stone Cottage
- Delightful Location
- Three Bedrooms
- NO CHAIN
- Set Over Three Floors
- Integral Garage/ Driveway
- Beautifully Finished

55 Market Street, Milnsbridge, Huddersfield, HD3 4HZ
T: 01484 644555 | E: sales@admresidential.co.uk
www.admresidential.co.uk

